

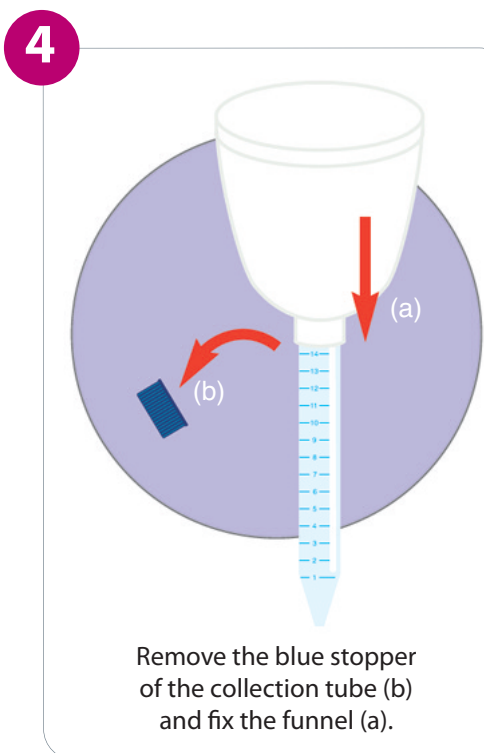
Required equipment:
1 Funnel (a) – 1 Collection tube (b)



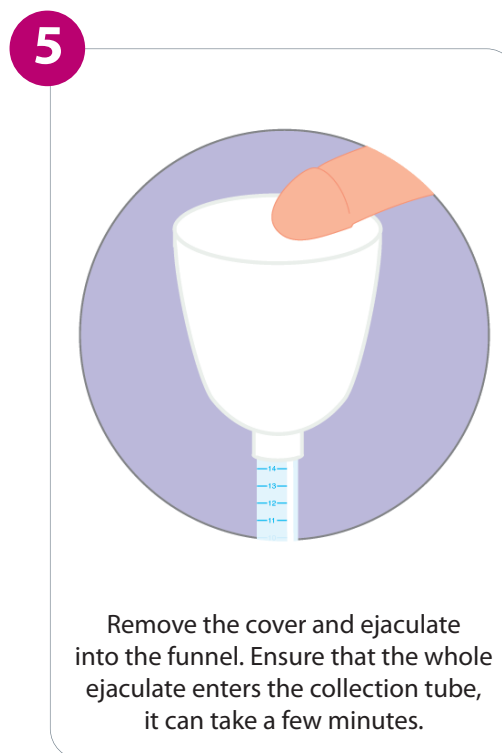
Wash hands and penis thoroughly with soap and water, rinse well and dry.



Open the sterile wrapping.



Remove the blue stopper of the collection tube (b) and fix the funnel (a).

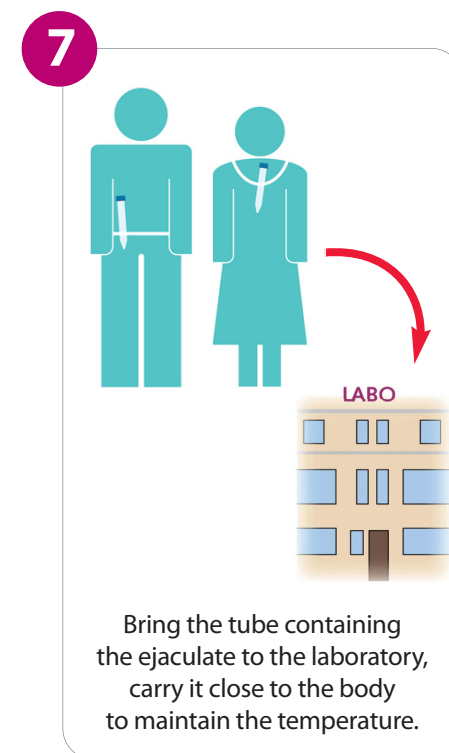


Remove the cover and ejaculate into the funnel. Ensure that the whole ejaculate enters the collection tube, it can take a few minutes.



Remove and throw the funnel.

Close the collection tube firmly with the enclosed blue stopper.



Bring the tube containing the ejaculate to the laboratory, carry it close to the body to maintain the temperature.